

Function:

Oventrop thermostats and thermostatic valves are proportional regulators working without auxiliary energy. They regulate the room temperature by varying the volume flow of heating water.

Oventrop thermostats meet the requirements of the German Energy Saving Directive **EnEV** and allow for the design of thermostatic radiator valves with a proportional control range of 1 or 2 Kelvin (k_V values see technical information "Thermostatic radiator valves").

Tender specification:

Thermostats (M 30 x 1.5)

Oventrop thermostat "Uni XH" with liquid sensor, connection thread M 30 x 1.5, control range may be limited or locked by using the limiting elements, marking of a set value with the help of the memo disk, with tactile setting device, control range 7-28°C.

white, with '0' setting	Item no.:
white, without '0' setting	1011365
	1011364

as above, but with remote sensor	
white, with '0' setting	1011565
capillary 2 m long	1011566
capillary 5 m long	

white, without '0' setting	
capillary 2 m long	1011582

Oventrop thermostat "Uni XHT" with liquid sensor, connection thread M 30 x 1.5, control range may be limited or locked by using the limiting elements, marking of a set value with the help of the memo disk, with tactile setting device, control range 7-28 °C, max. heating water temperature 90 °C.

transparent, with '0' setting	1011300
-------------------------------	---------

Oventrop thermostat "Uni XHM" with liquid sensor, connection thread M 30 x 1.5, control range may be limited or locked by using the limiting elements, marking of a set value with the help of the memo disk, with tactile setting device, control range 7-28°C.

In combination with valves, the specific piston stroke and thus the k_V value is higher compared to other Oventrop valves.

white, with '0' setting	1011360
-------------------------	---------

Oventrop thermostat "Uni LH" with liquid sensor, connection thread M 30 x 1.5, control range may be limited or locked by using the concealed limiting elements, marking of a set value with the help of the memo disk, with tactile setting device, control range 7-28 °C.

white, with '0' setting	1011465
-------------------------	---------

without memo disk, please inquire about customised memo disk	
white, with '0' setting	1011466
white, without '0' setting	1011464

signal grey (RAL 7004), with collar nut cover with '0' setting	1011461
---	---------

anthracite (RAL 7016), with collar nut cover with '0' setting	1011467
--	---------

gold plated, with collar nut cover with '0' setting	1011468
--	---------

chrome plated, with collar nut cover with '0' setting	1011469
--	---------

as above but with remote sensor	
white, with '0' setting	
capillary 2 m long	1011665
capillary 5 m long	1011666
capillary 10 m long	1011667

white, without '0' setting	
capillary 2 m long	1011682

as above but with remote sensor	
white, without '0' setting	
capillary 2 m long	1011688

Oventrop thermostat "Uni LH" with liquid sensor, for indoor swimming pools and health spa, connection thread M 30 x 1.5, control range may be limited or locked by using the concealed limiting elements, marking of a set value with the help of the memo disk, with tactile setting device, control range 8-38 °C.

white, without '0' setting	1011488
----------------------------	---------

as above but with remote sensor	
white, without '0' setting	
capillary 2 m long	1011688



Thermostat "Uni XH"



Thermostat "Uni XH" with remote sensor



Thermostat "Uni XHM"



Thermostat "Uni LH"



Thermostat "Uni LH" with remote sensor

Oventrop thermostat with remote control **“Uni FH”** with liquid sensor, connection thread M 30 x 1.5, control range may be limited or locked by using the concealed limiting elements, control range 7-28 °C.

	Item no.:
white with '0' setting,	
capillary 2 m long	1012295
capillary 5 m long	1012296
capillary 10 m long	1012297

as above but with additional remote sensor

white, with '0' setting	
capillary 2 m long	1012395
capillary 5 m long	1012396



Thermostat with remote control “Uni FH”

Oventrop thermostat **“Uni LHB”**, lockshield configuration, with liquid sensor, connection thread M 30 x 1.5, setting of the concealed control range can only be carried out by using a special tool (the set nominal temperature value is not modified by turning the handgrip), with integrated anti-theft device and increased flexional strength (load up to 100 kg), control range 7-28 °C.

white, without '0' setting	1011410
----------------------------	---------



Thermostat “Uni LHB”

Oventrop thermostat **“pinox H”** with liquid sensor, connection thread M 30 x 1.5, with lever for an easy and precise temperature setting, including chrome plated or white collar nut cover, control range 7-28 °C.

chrome plated, without '0' setting	1012165
white, without '0' setting	1012166



Thermostat “pinox H”

Oventrop thermostat **“Uni SH”** with liquid sensor, connection thread M 30 x 1.5, with tactile setting device, control range 7-28 °C.

white/chrome plated, with '0' setting	1012065
white, with '0' setting	1012066
chrome plated, with '0' setting	1012069
stainless steel finish, with '0' setting	1012085



Thermostat “Uni SH”

Oventrop thermostat **“vindo TH”** with liquid sensor, connection thread M 30 x 1.5, control range may be limited or locked by using the limiting elements, with tactile setting device, control range 7-28 °C.

white, with '0' setting	1013066
-------------------------	---------



Thermostat “vindo TH”

Oventrop thermostat **“Uni CH”** with liquid sensor and moveable collar nut cover, connection thread M 30 x 1.5, design Colani, control range 7-28 °C.

white, without '0' setting	1011265
----------------------------	---------



Thermostat “Uni CH”

Thermostats (squeeze connection)

Oventrop thermostat **“Uni XD”** with liquid sensor, can be fitted without adapter to the integrated distributors and thermostatic radiator valves with squeeze connection of the company Danfoss - series RA, control range may be limited or locked by using the limiting elements, marking of a set value with the help of the memo disk, with tactile setting device, control range 7-28 °C.

Item no.:
 white, with ‘0’ setting 1011375
 white, without ‘0’ setting 1011374
 as above but with remote sensor
 white, with ‘0’ setting
 capillary 2 m long 1011575

Oventrop thermostat **“Uni LD”** with liquid sensor, can be fitted without adapter to the integrated distributors and thermostatic radiator valves with squeeze connection of the company Danfoss - series RA, control range may be limited or locked by using the concealed limiting elements, marking of a set value with the help of the memo disk, with tactile setting device, control range 7-28 °C.

white, with ‘0’ setting 1011475
 without memo disk,
 please inquire about customised memo disk,
 white, with ‘0’ setting 1011476
 white, without ‘0’ setting 1011472
 signal grey (RAL 7004), with collar nut cover
 with ‘0’ setting 1011470
 anthracite (RAL 7016), with collar nut cover
 with ‘0’ setting 1011478
 gold plated, with collar nut cover
 with ‘0’ setting 1011480
 chrome plated, with collar nut cover
 with ‘0’ setting 1011479
 as above but with remote sensor
 white, with ‘0’ setting
 capillary 2 m long 1011685

Oventrop thermostat with remote control **“Uni FD”** with liquid sensor, can be fitted without adapter to the integrated distributors and thermostatic radiator valves with squeeze connection of the company Danfoss - series RA, control range may be limited or locked by using the concealed limiting elements, control range 7-28 °C.

white, with ‘0’ setting
 capillary 2 m long 1012275

Oventrop thermostat **“pinox D”** with liquid sensor, can be fitted without adapter to the integrated distributors and thermostatic radiator valves with squeeze connection of the company Danfoss - series RA, with lever for an easy and precise temperature setting, including chrome plated or white collar nut cover, control range 7-28 °C.

chrome plated, without ‘0’ setting 1012175
 white, without ‘0’ setting 1012176

Oventrop thermostat **“vindo TD”** with liquid sensor, can be fitted without adapter to the integrated distributors and thermostatic radiator valves with squeeze connection of the company Danfoss - series RA, control range may be limited or locked by using the limiting elements, with tactile setting device, control range 7-28 °C.

white, with ‘0’ setting 1013076



Thermostat “Uni XD”



Thermostat “Uni LD”



Thermostat “Uni LD” with remote sensor



Thermostat with remote control “Uni FD”



Thermostat “pinox D”



Thermostat “vindo TD”

Oventrop thermostat “**vindo RTD**” with liquid sensor, can be fitted without adapter to the integrated distributors and thermostatic radiator valves with squeeze connection of the company Danfoss - series RTD, control range may be limited or locked by using the limiting elements, with tactile setting device, control range 7-28 °C. Cannot be used with Oventrop valves with connection thread M 30 x 1.5.

white, with '0' setting

Item no.:
1613066



Thermostat “vindo RTD”

Oventrop thermostat “**Uni LDV**” with liquid sensor, can be fitted without adapter to the integrated distributors and thermostatic radiator valves with squeeze connection of the company Danfoss - series RAV (thermostat connection Ø 34 mm), control range may be limited or locked by using the concealed limiting elements, marking of a set value with the help of the memo disk, with tactile setting device, control range 7-28 °C.

white, with '0' setting

1616575



Thermostat “Uni LDV”

Oventrop thermostat “**Uni LDVL**” with liquid sensor, can be fitted without adapter to the integrated distributors and thermostatic radiator valves with squeeze connection of the company Danfoss - series RAVL (thermostat connection Ø 26 mm), control range may be limited or locked by using the concealed limiting elements, marking of a set value with the help of the memo disk, with tactile setting device, control range 7-28 °C.

white, with '0' setting

1616675



Thermostat “Uni LDVL”

Thermostats (M 30 x 1.0)

Oventrop thermostat “**Uni L**” with liquid sensor, connection thread M 30 x 1.0, control range may be limited or locked by using the concealed limiting elements, marking of a set value with the help of the memo disk, with tactile setting device, control range 7-28 °C.

white, with '0' setting

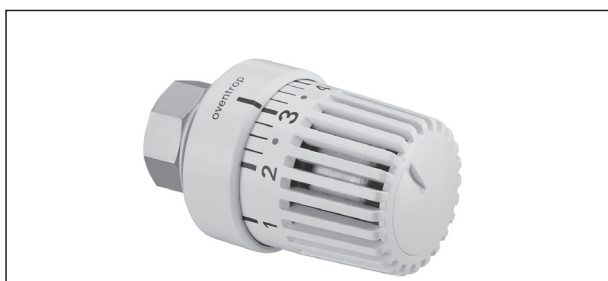
1011401

as above but with remote sensor

white, with '0' setting

capillary 2 m long

1011651



Thermostat “Uni L”



Thermostat “Uni L” with remote sensor

Special thermostats

Oventrop thermostat **“Uni LA”** with liquid sensor, connection thread M 28 x 1.5, control range may be limited or locked by using the concealed limiting elements, marking of a set value with the help of the memo disk, with tactile setting device, control range 7-28 °C.

Suitable for Herz thermostatic radiator valve bodies.

white, with '0' setting
white, without '0' setting

Item no.:
1613401
1613465



Thermostat “Uni LA” M 28 x 1.5

Oventrop thermostat **“Uni LI”** with liquid sensor, connection thread M 32 x 1.0, control range may be limited or locked by using the concealed limiting elements, marking of a set value with the help of the memo disk, with tactile setting device, control range 7-28 °C.

Suitable for Ista thermostatic radiator valve bodies.

white, with '0' setting

1616200



Thermostat “Uni LI” M 32 x 1.0

Oventrop thermostat **“Uni LR”** with liquid sensor, connection thread M 33 x 2.0, control range may be limited or locked by using the concealed limiting elements, marking of a set value with the help of the memo disk, with tactile setting device, control range 7-28 °C.

Suitable for Rosswein thermostatic radiator valve bodies.

white, with '0' setting

1616301



Thermostat “Uni LR” M 33 x 2.0

Oventrop thermostat **“Uni LK”** with liquid sensor, connection thread M 28 x 1.0, control range may be limited or locked by using the concealed limiting elements, marking of a set value with the help of the memo disk, with tactile setting device, control range 7-28 °C.

Suitable for Kosmia thermostatic radiator valve bodies.

white, with '0' setting

1613501



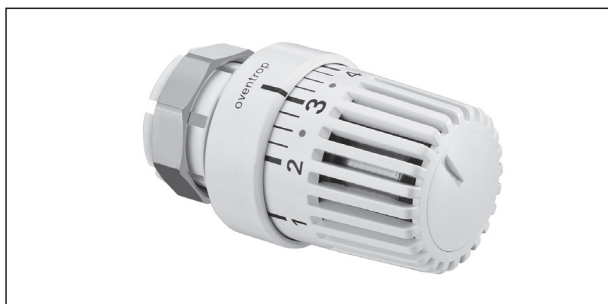
Thermostat “Uni LK” M 28 x 1.0

Oventrop thermostat **“Uni LV”** with liquid sensor, squeeze connection with collar nut, control range may be limited or locked by using the concealed limiting elements, marking of a set value with the help of the memo disk, with tactile setting device, control range 7-28 °C.

Suitable for Kosmia thermostatic radiator valve bodies manufactured since 1987.

white, with '0' setting

1616001

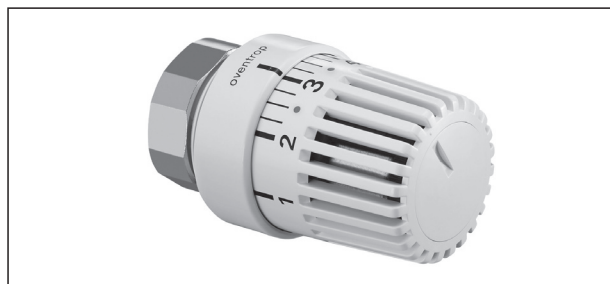


Thermostat “Uni LV” with squeeze connection

Oventrop thermostat **“Uni LM”** with liquid sensor, connection thread M 38 x 1.5, control range may be limited or locked by using the concealed limiting elements, marking of a set value with the help of the memo disk, with tactile setting device, control range 7-28 °C.
Suitable for Meges thermostatic radiator valve bodies.

white, with '0' setting

Item no.:
1616100



Thermostat “Uni LM” M 38 x 1.5

Oventrop thermostat **“Uni LO”** with liquid sensor, connection thread M 38 x 1.5, control range may be limited or locked by using the concealed limiting elements, marking of a set value with the help of the memo disk, with tactile setting device, control range 7-28 °C.
Suitable for Oreg (Ondal) thermostatic radiator valve bodies.

white, with '0' setting

1616500



Thermostat “Uni LO” M 38 x 1.5

Oventrop thermostat with liquid sensor, connection thread M 40 x 1.5, marking of a set value with the help of the memo disk, control range 7-28 °C.
Only for **Oventrop “maxi/mini” thermostatic radiator valves** manufactured up to 1974. The valves are no longer produced.

anthracite/white, with '0' setting

1015500



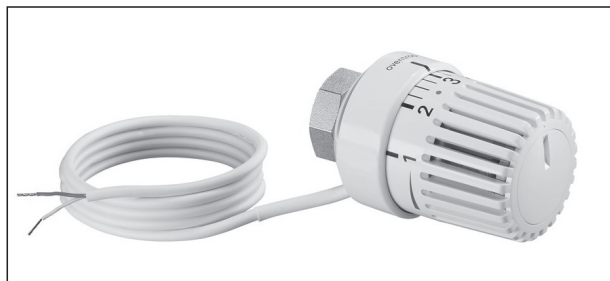
Thermostat für „maxi/mini“-Ventile M 40 x 1.5

Oventrop thermostat **“Uni LHZ”** with liquid sensor, integrated electric temperature setback, connection thread M 30 x 1.5, control range may be limited or locked by using the concealed limiting elements, marking of a set value with the help of the memo disk, with tactile setting device, control range 7-28 °C.

Operating current: 24 V AC/DC
Power consumption: about 0.6 W
Temperature setback: up to about 7 K
Connecting cable: 2 x 0.25 mm²
Length 1 m

white, without '0' setting

1150300



Thermostat “Uni LHZ” M 30 x 1.5

Accessories for thermostats

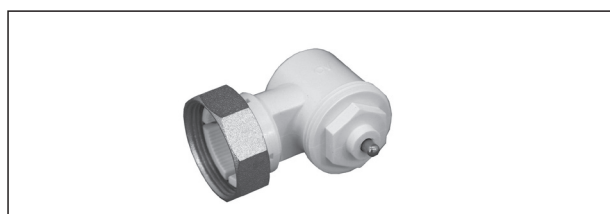
Angle pattern adapter

For the connection of thermostats at a right angle to the operating direction of the valve, especially suitable for radiators with integrated distributor, connection at the left and right hand side of the radiator.

both ports connection thread M 30 x 1.5
white
anthracite

Item no.:

1011450
1641451



Angle pattern adapter both port connection thread M 30 x 1.5

both ports squeeze connection

white
Thermostatic side suitable for thermostats with squeeze connection ("Uni XD", "Uni LD", "vindo TD" and "pinox D"). Valve side suitable for valves of the company Danfoss, series RA.

1011452



Angle pattern adapter both ports squeeze connection

Adapter, nickel plated

suitable for the conversion of connection thread M 30 x 1.0 to M 30 x 1.5
(for Oventrop valves manufactured up to 1998)

1011445

Connection to the valve: M 30 x 1.0
Connection to the thermostat: M 30 x 1.5

M 32 x 1.0 to M 30 x 1.5 (for Ista valves)

1661445

Connection to the valve: M 32 x 1.0
Connection to the thermostat: M 30 x 1.5



Adapter

Graduated collar "Uni Clip" for "Uni XH", "Uni XHM" and "Uni XD"

Due to the vertical position of the figures, the set values can be easily read off in case of lateral connection of the thermostat (for thermostats with '0' setting).

right hand model
left hand model

1011396
1011397



"Uni Clip"

Anti-theft ring

white

for thermostats "Uni XH", "Uni XHM", "Uni LH", "Uni LHZ", "Uni SH", "Uni L", "Uni LA" and "vindo TH" 1011766
for thermostats "Uni XD", "Uni LD" and "vindo TD" 1011775



Anti-theft ring

Reinforcing cap, for the stabilisation and protection of the thermostat from theft and vandalism.

white

for thermostats "Uni LH", "Uni LHZ", "Uni LA"

not lockable 1011865
lockable 1011866

for thermostat "Uni L"

not lockable 1011801
lockable 1011811

for thermostat "Uni LD"

not lockable 1011875



Reinforcing cap

"SH-Cap"

Design cover for thermostat "Uni SH"

anthracite (RAL 7016) 1012080
chrome plated 1012081
white (RAL 9016) 1012082



"SH-Cap"

Collar nut cover for thermostats

“Uni XH”, “Uni XHM”, “Uni LH”,
“Uni LHZ”, “Uni SH”, “Uni LA”, “vindo TH”, “pinox H”

	Item no.:
white	1011393
anthracite	1011380
chrome plated	1011381
gold plated	1011382
stainless steel finish	1011383
“Uni L”	
white	1011493



Collar nut cover

Tool for releasing the graduation cap and clips of the thermostats “Uni LH”, “Uni L”, “Uni LHZ”, “Uni LD”, “Uni LDV”, “Uni LDVL” and special thermostats

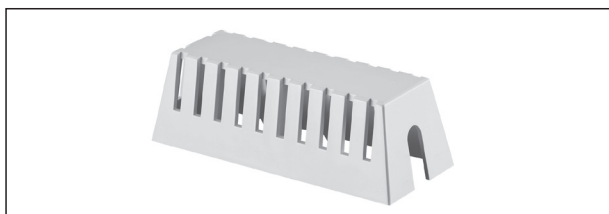
1989100



Tool

Cover for remote sensor suitable for all remote sensors

white 1011698



Cover for remote sensor

Manual head

white
Connection thread M 30 x 1.5 1012565
Squeeze connection 1012575



Manual head

Wall connection set for thermostat “Uni LHZ”

as additional protection for the wall installation (in a flush box) of the connecting cable.

white 1150390

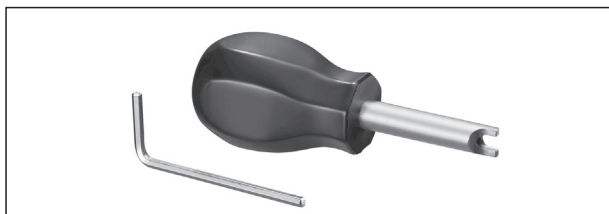


Wall connection set for thermostat “Uni LHZ”

Setting key

for nominal temperature setting at the thermostat “Uni LHB”

1011497



Setting key

Universal tool

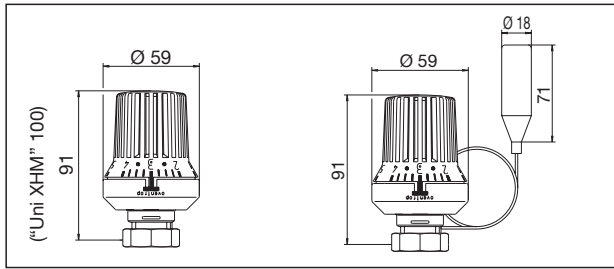
for nominal temperature setting at the thermostat “Uni LHB”, presetting of the valve as well as releasing of the graduation cap of the thermostats “Uni LH”, “Uni LHZ”, “Uni L”, “Uni LD”, “Uni LDV”, “Uni LDVL” and special thermostats. With additional Allen key (2.5 mm) to secure the thermostat “Uni LHB”.

for valves “AV 9” and “AQ” 1011489
for valves “AV 6” 1011496



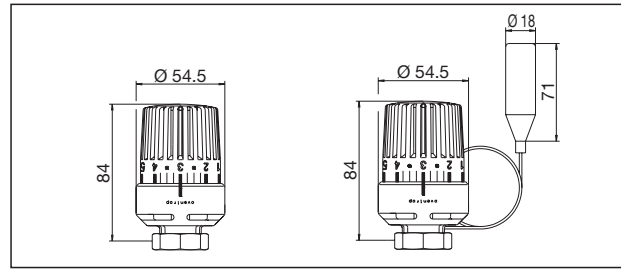
Universal tool

Thermostats



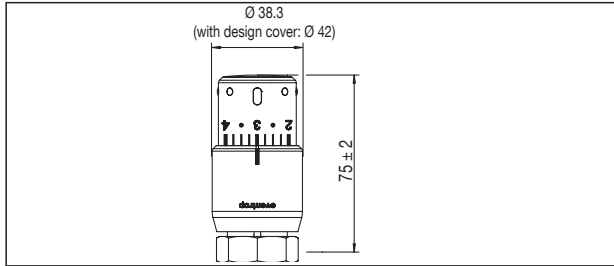
Thermostats "Uni XH",
"Uni XHT", "Uni XHM"

Thermostat "Uni XH"
with remote sensor

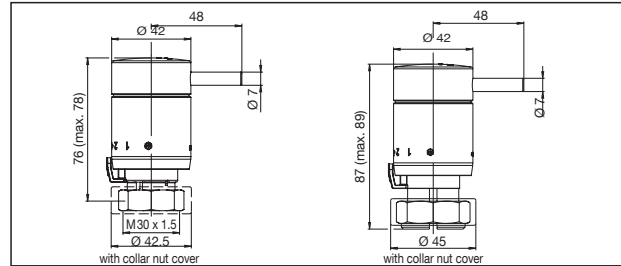


Thermostat "Uni LH"

Thermostat "Uni LH"
with remote sensor

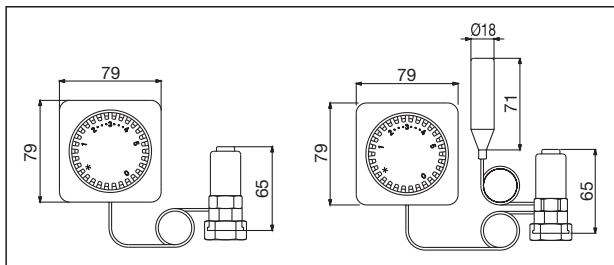


Thermostat "Uni SH"



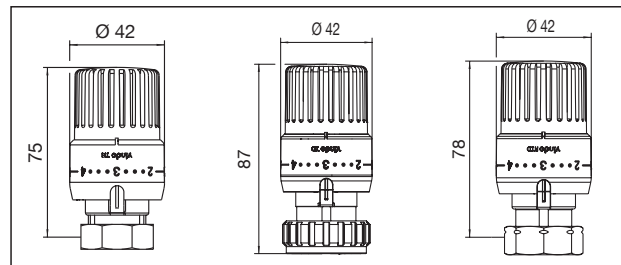
Thermostat "pinox H"

Thermostat "pinox D"



Remote control "Uni FH"
Depth: 54 mm

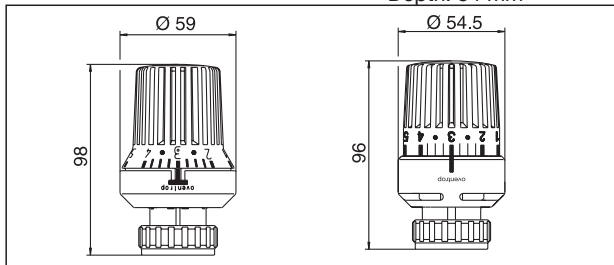
Remote control with additional
remote sensor "Uni FH"
Depth: 54 mm



Thermostat
"vindo TH"

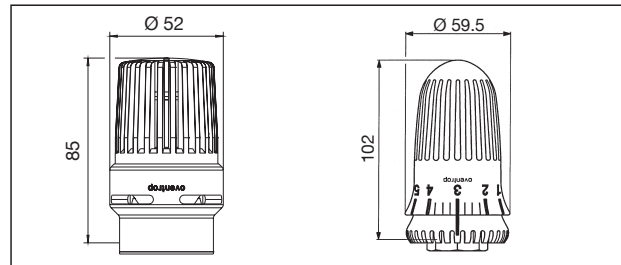
Thermostat
"vindo TD"

Thermostat
"vindo RTD"



Thermostat "Uni XD"

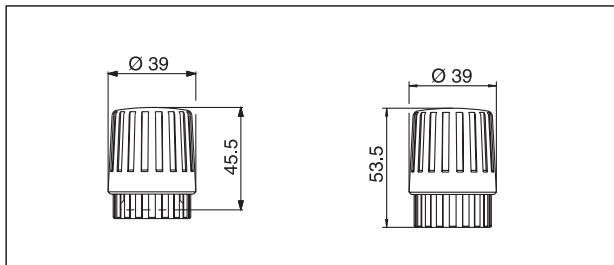
Thermostat "Uni LD"



Thermostat "Uni LHB"

Thermostat "Uni CH"

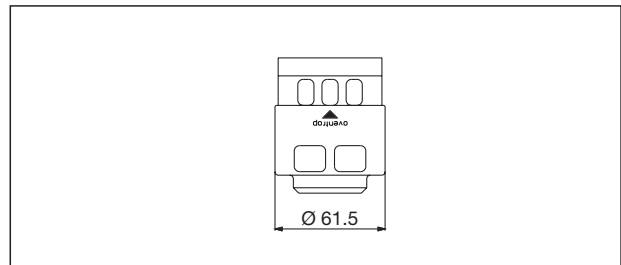
Manual head



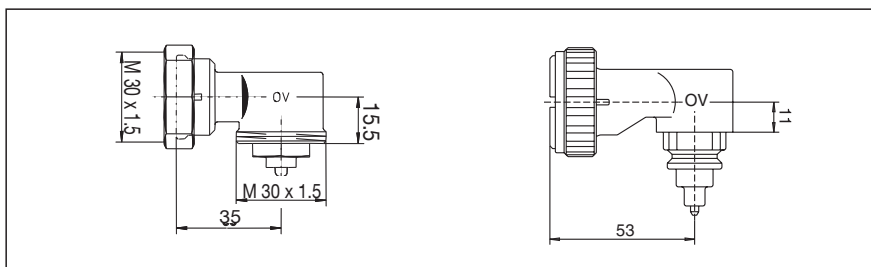
Item no. 1012565

Item no. 1012575

Accessories



Reinforcing cap for "Uni LH"



Angle pattern adapter item no. 1011450

Angle pattern adapter with squeeze
connection, item no. 1011452

Demands and technical data of the thermostats combined with Oventrop valves

Demands:

Oventrop thermostatic radiator valves comply with the EN 215 standard

The Oventrop thermostatic radiator valves "AF" also comply with:

- the directives of the Association for district heating (AGFW, work sheet FW 507).
- the conditions of the company ESSO AG (TA list).

The Oventrop thermostatic radiator valves fulfil the demands of the German Energy Saving Directive (EnEV). They are automatically working "room by room" regulating devices (EnEV § 14).

E The Oventrop thermostatic radiator valves "A", "AV 9", "RF", "AV 6", "AF" (angle and straight pattern valves DN 10 - DN 20) and "AZ H" (straight pattern valves DN 20 + DN 25) with the thermostats "Uni XH", "Uni LH", "Uni SH", "vindo TH", "pinox H", "Uni LGH", "Uni L" as well as "Uni L" and "Uni LH" with remote sensor and the thermostatic radiator valve "VN" with the thermostat "Uni LD" are Keymark tested and certified (Reg.-No. 011-6T0002).

The Oventrop thermostats "Uni XH", "Uni LH", "Uni SH" and "vindo TH" comply with the requirements of the Energy Efficiency Class A of the "Thermostatic Efficiency Label (TELL).

Further details can be obtained from the installation and operating instructions.

Technical data:

- Nominal flow rate: (see charts technical information "Thermostatic radiator valves")
- Max. flow of heating water: (see charts technical information "Thermostatic radiator valves")
- Control range: 7-28 °C
- Position 3: corresponds to about 20 °C
- Max. differential pressure against which the valve closes: 1 bar: Valves "A, AV 9, CV 9, E, ADV 9, RF, RFV 9"
3 bar: Valve "AF"
- Valve body material: Bronze/brass
- Hysteresis:

"Uni XH":	0.2 K
"Uni LH", "Uni L":	0.2 K
"Uni LD":	0.15 K
"Uni SH":	0.2 K
"vindo TH":	0.2 K
"Uni CH":	0.2 K
"pinox H":	0.2 K
- Heating water temperature effect:

"Uni XH":	0.22 K
"Uni LH", "Uni L":	0.65 K
"Uni LD":	0.29 K
"Uni SH":	0.9 K
"vindo TH":	0.9 K
"Uni CH":	0.65 K
"pinox H":	1.20 K
"Uni XH", "Uni LH", "Uni L" with remote sensor:	0.2 K
- Differential pressure effect:

"Uni XH":	0.4 K
"Uni LH", "Uni L":	0.4 K
"Uni LD":	0.60 K
"Uni SH":	0.4 K
"vindo TH":	0.4 K
"Uni CH":	0.4 K
"pinox H":	1.20 K
- Closing time:

"Uni XH":	22 minutes
"Uni LH", "Uni L":	23 minutes
"Uni LD":	26 minutes
"Uni SH":	16 minutes
"vindo TH":	18 minutes
"Uni CH":	23 minutes
"pinox H":	18 minutes
- Sensor temperature: 0 °C - 50 °C
- Max. heating water temperature: 120 °C
(90 °C for thermostat "Uni XHT")
- Storage temperature: -10 °C - +50 °C

Subject to technical modifications without notice.

Product range 1
ti 112-EN/10/MW
Edition 2017